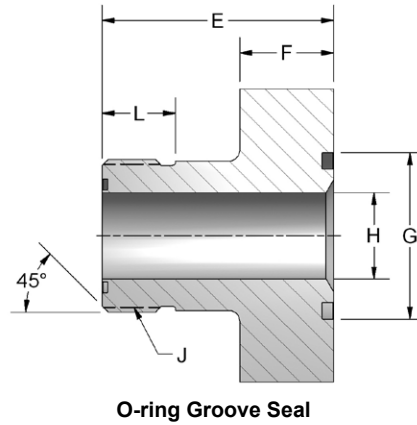
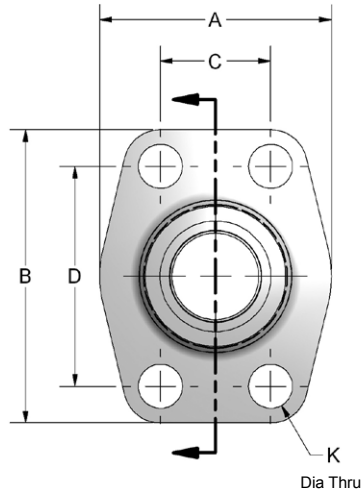
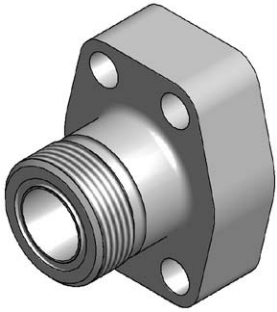


# ORFS Male Thread



## Ordering Information

FG	Flange Size	Material	Product Type	Seal	Rating Code	ORFS Size	Thread Type	Mounting							
	<table border="1"> <thead> <tr> <th colspan="2">Flange Size</th> </tr> <tr> <td colspan="2">Rating code 1 or 2</td> </tr> <tr> <td>08</td> <td>0.50"</td> </tr> <tr> <td>12</td> <td>0.75"</td> </tr> <tr> <td>16</td> <td>1.00"</td> </tr> <tr> <td>20</td> <td>1.25"</td> </tr> <tr> <td>24</td> <td>1.50"</td> </tr> </thead></table>	Flange Size		Rating code 1 or 2		08	0.50"	12	0.75"	16	1.00"	20	1.25"	24	1.50"
Flange Size															
Rating code 1 or 2															
08	0.50"														
12	0.75"														
16	1.00"														
20	1.25"														
24	1.50"														

 | Material |              | |----------|--------------| | C        | Carbon Steel | | | Product Type |             | |--------------|-------------| | M            | Male Thread | | | Seal |               | |------|---------------| | G    | O-ring Groove | | | Rating Code |   | |-------------|---| | 1           | Code 61 • SAE J518<br>3.5 - 35 MPa • ISO 6162-1 | | 2           | Code 62 • SAE J518<br>40 MPa • ISO 6162-2       | | | ORFS Size   |       | |---|-------| | Not all ORFS sizes are available for each flange size. See chart next page. |       | | 08  | 0.50" | | 12  | 0.75" | | 16  | 1.00" | | 20  | 1.25" | | 24  | 1.50" | | | Thread Type |                    | |-------------|--------------------| | R           | ORFS<br>ISO 8434-3 | | | Mounting |  | |----------|--| | U        | UNC mounting kit                         | | M        | Metric mounting kit                      | | X        | No kit included<br>UNC mounting holes    | | Y        | No kit included<br>Metric mounting holes | |

# ORFS Male Thread

CODE 61 MALE ORFS															
FLANGE SIZE	A	B	C	D	E	F	G	H	J ORFS	K DIA THRU		L	MOUNTING HARDWARE SHCS		
										Mounting U or X	Mounting M or Y		O-RING	Mounting U	Mounting M
0.50	1.81	2.13	.688	1.500	1.75	.88	1.000	.394	0.812-16	.344	8.5mm	.504	210	0.313-18x1.25	M8-1.25x30
0.75	1.97	2.56	.875	1.875	2.00	.88	1.250	.611	1.188-12	.413	10.5mm	.670	214	0.375-16x1.50	M10-1.5x40
1.00	2.17	2.75	1.031	2.062	2.00	.88	1.560	.811	1.438-12	.413	10.5mm	.689	219	0.375-16x1.50	M10-1.5x40
1.25	2.68	3.12	1.188	2.312	2.25	.88	1.750	1.024	1.688-12	.469	10.5mm	.689	222	0.438-14x1.75	M10-1.5x45
1.50	3.07	3.66	1.406	2.750	2.50	.98	2.115	1.260	2.000-12	.531	12.5mm	.689	225	0.500-13x2.00	M12-1.75x45

CODE 62 MALE ORFS															
FLANGE SIZE	A	B	C	D	E	F	G	H	J ORFS	K DIA THRU		L	MOUNTING HARDWARE SHCS		
										Mounting U or X	Mounting M or Y		O-RING	Mounting U	Mounting M
0.50	1.81	2.21	.719	1.594	1.75	.88	1.000	.394	0.812-16	.344	8.5mm	.504	210	0.313-18x1.25	M8-1.25x30
0.75	2.17	2.80	.937	2.000	2.25	.88	1.250	.611	1.188-12	.413	10.5mm	.670	214	0.375-16x1.50	M10-1.5x40
1.00	2.56	3.19	1.093	2.250	2.50	.98	1.560	.811	1.438-12	.492	12.5mm	.689	219	0.438-14x1.75	M12-1.75x45
1.25	3.07	3.75	1.250	2.625	2.62	1.06	1.750	1.024	1.688-12	.531	12.5mm	.689	222	0.500-13x1.75	M12-1.75x45
1.50	3.70	4.41	1.437	3.125	2.88	1.18	2.115	1.260	2.000-12	.656	16.5mm	.689	225	0.625-11x2.25	M16-2.0x55

## Pressure Ratings and Fastener Torque Values

CODE 61 SAE J518-1 / ISO 6162-1						
Dash Size	Inch Size	Max Working Pressure		Fastener Torque Value		
		PSI	MPa	Grade 8 UNC (lb-ft)	Grade 10.9 Metric (N-m)	
-8	0.50"	5000	35.0	24	32	
-12	0.75"	5000	35.0	44	70	
-16	1.00"	4600	32.0	44	70	
-20	1.25"	4000	28.0	68	70	
-24	1.50"	3000	21.0	111	130	
-32	2.00"	3000	21.0	111	130	
-40	2.50"	2500	17.5	111	130	
-48	3.00"	2300	16.0	218	295	
-56	3.50"	500	3.5	218	295	
-64	4.00"	500	3.5	218	295	
-80	5.00"	500	3.5	218	295	

CODE 62 SAE J518-2 / ISO 6162-2						
Dash Size	Inch Size	Max Working Pressure		Fastener Torque Value		
		PSI	MPa	Grade 8 UNC (lb-ft)	Grade 10.9 Metric (N-m)	
-8	0.50"	6000	40.0	24	32	
-12	0.75"	6000	40.0	44	70	
-16	1.00"	6000	40.0	68	130	
-20	1.25"	6000	40.0	111	130	
-24	1.50"	6000	40.0	218	295	
-32	2.00"	6000	40.0	332	550	

Please note that all pressure ratings in this catalog refer to the flange connection. Adapting the flange to other connections, such as braze tube, welded pipe, or threaded ports / stud ends could reduce maximum working pressure.