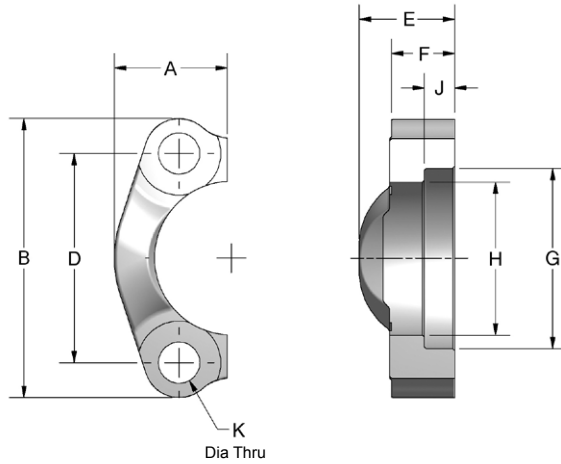


Split Flange



Ordering Information

FC	Flange Size	Material	Product Type	Rating Code	Mounting																																																				
	<table border="1"> <thead> <tr> <th colspan="2">Flange Size</th> </tr> </thead> <tbody> <tr> <td colspan="2">Rating code 1 or 2</td> </tr> <tr> <td>08</td> <td>0.50"</td> </tr> <tr> <td>12</td> <td>0.75"</td> </tr> <tr> <td>16</td> <td>1.00"</td> </tr> <tr> <td>20</td> <td>1.25"</td> </tr> <tr> <td>24</td> <td>1.50"</td> </tr> <tr> <td>32</td> <td>2.00"</td> </tr> <tr> <td colspan="2">Rating code 1 only</td> </tr> <tr> <td>40</td> <td>2.50"</td> </tr> <tr> <td>48</td> <td>3.00"</td> </tr> <tr> <td>56</td> <td>3.50"</td> </tr> <tr> <td>64</td> <td>4.00"</td> </tr> </tbody> </table>	Flange Size		Rating code 1 or 2		08	0.50"	12	0.75"	16	1.00"	20	1.25"	24	1.50"	32	2.00"	Rating code 1 only		40	2.50"	48	3.00"	56	3.50"	64	4.00"	<table border="1"> <thead> <tr> <th colspan="2">Material</th> </tr> </thead> <tbody> <tr> <td>C</td> <td>Carbon Steel</td> </tr> <tr> <td>S</td> <td>Stainless Steel</td> </tr> </tbody> </table>	Material		C	Carbon Steel	S	Stainless Steel	<table border="1"> <thead> <tr> <th colspan="2">Product Type</th> </tr> </thead> <tbody> <tr> <td>S</td> <td>Split Flange</td> </tr> </tbody> </table>	Product Type		S	Split Flange	<table border="1"> <thead> <tr> <th colspan="2">Rating Code</th> </tr> </thead> <tbody> <tr> <td>1</td> <td>Code 61 • SAE J518 3.5 - 35 MPa • ISO 6162-1</td> </tr> <tr> <td>2</td> <td>Code 62 • SAE J518 40 MPa • ISO 6162-2</td> </tr> </tbody> </table>	Rating Code		1	Code 61 • SAE J518 3.5 - 35 MPa • ISO 6162-1	2	Code 62 • SAE J518 40 MPa • ISO 6162-2	<table border="1"> <thead> <tr> <th colspan="2">Mounting</th> </tr> </thead> <tbody> <tr> <td>U</td> <td>UNC mounting kit</td> </tr> <tr> <td>M</td> <td>Metric mounting kit</td> </tr> <tr> <td>X</td> <td>No kit included UNC mounting holes</td> </tr> <tr> <td>Y</td> <td>No kit included Metric mounting holes</td> </tr> </tbody> </table>	Mounting		U	UNC mounting kit	M	Metric mounting kit	X	No kit included UNC mounting holes	Y	No kit included Metric mounting holes
Flange Size																																																									
Rating code 1 or 2																																																									
08	0.50"																																																								
12	0.75"																																																								
16	1.00"																																																								
20	1.25"																																																								
24	1.50"																																																								
32	2.00"																																																								
Rating code 1 only																																																									
40	2.50"																																																								
48	3.00"																																																								
56	3.50"																																																								
64	4.00"																																																								
Material																																																									
C	Carbon Steel																																																								
S	Stainless Steel																																																								
Product Type																																																									
S	Split Flange																																																								
Rating Code																																																									
1	Code 61 • SAE J518 3.5 - 35 MPa • ISO 6162-1																																																								
2	Code 62 • SAE J518 40 MPa • ISO 6162-2																																																								
Mounting																																																									
U	UNC mounting kit																																																								
M	Metric mounting kit																																																								
X	No kit included UNC mounting holes																																																								
Y	No kit included Metric mounting holes																																																								

Mounting options ("U" and "M") include: (2) Split Flange halves, (4) hex head screws with washers, and (1) Viton O-ring.
 Mounting options ("X" and "Y") include: (1) Split Flange half only.
 Split Flange halves are silver trivalent plated.

Split Flange

CODE 61 SPLIT FLANGE													
FLANGE SIZE	A	B	D	E	F	G	H	J	K DIA THRU		MOUNTING HARDWARE - HHCS		
									Mounting U or X	Mounting M or Y	O-RING	Mounting U	Mounting M
0.50	.86	2.12	1.500	.75	.50	1.219	.955	.245	.344	8.5mm	210	0.313-18x1.25	M8-1.25x30
0.75	.98	2.56	1.875	.88	.56	1.531	1.265	.245	.406	10.5mm	214	0.375-16x1.25	M10-1.5x30
1.00	1.11	2.75	2.062	.94	.62	1.781	1.515	.295	.406	10.5mm	219	0.375-16x1.25	M10-1.5x30
1.25	1.39	3.12	2.312	.88	.56	2.031	1.720	.295	.469	10.5mm	222	0.438-14x1.50	M10-1.5x40
1.50	1.58	3.69	2.750	1.00	.62	2.406	2.000	.295	.531	12.5mm	225	0.500-13x1.50	M12-1.75x40
2.00	1.86	4.00	3.062	1.03	.62	2.844	2.470	.355	.531	12.5mm	228	0.500-13x1.50	M12-1.75x40
2.50	2.09	4.50	3.500	1.50	.75	3.344	2.950	.355	.531	12.5mm	232	0.500-13x1.75	M12-1.75x45
3.00	2.53	5.31	4.188	1.62	.88	4.031	3.580	.355	.656	16.5mm	237	0.625-11x1.75	M16-2.0x45
3.50	2.70	6.00	4.750	1.12	.88	4.531	4.030	.422	.656	16.5mm	241	0.625-11x2.00	M16-2.0x50
4.00	2.95	6.38	5.125	1.38	1.00	5.031	4.530	.422	.656	16.5mm	245	0.625-11x2.00	M16-2.0x50

Mounting options ("U" and "M") include: (2) Split Flange halves, (4) hex head screws with washers, and (1) Viton O-ring.
 Mounting options ("X" and "Y") include: (1) Split Flange half only.
 Split Flange halves are silver trivalent plated.

CODE 62 SPLIT FLANGE													
FLANGE SIZE	A	B	D	E	F	G	H	J	K DIA THRU		MOUNTING HARDWARE - HHCS		
									Mounting U or X	Mounting M or Y	O-RING	Mounting U	Mounting M
0.50	.89	2.22	1.594	.88	.62	1.281	.970	.285	.344	8.5mm	210	0.313-18x1.25	M8-1.25x30
0.75	1.14	2.81	2.000	1.12	.75	1.656	1.280	.325	.406	10.5mm	214	0.375-16x1.50	M10-1.5x40
1.00	1.33	3.19	2.250	1.31	.94	1.906	1.530	.355	.469	12.5mm	219	0.438-14x1.75	M12-1.75x45
1.25	1.48	3.75	2.625	1.50	1.06	2.156	1.750	.385	.531	12.5mm	222	0.500-13x1.75	M12-1.75x45
1.50	1.83	4.44	3.125	1.69	1.19	2.531	2.030	.475	.656	16.5mm	225	0.625-11x2.25	M16-2.0x55
2.00	2.20	5.25	3.812	2.06	1.44	3.156	2.660	.475	.781	21.0mm	228	0.750-10x2.75	M20-2.5x65

Mounting options ("U" and "M") include: (2) Split Flange halves, (4) hex head screws with washers, and (1) Viton O-ring.
 Mounting options ("X" and "Y") include: (1) Split Flange half only.
 Split Flange halves are silver trivalent plated.

Pressure Ratings and Fastener Torque Values

CODE 61 SAE J518-1 / ISO 6162-1						
Dash Size	Inch Size	Max Working Pressure		Fastener Torque Value		Grade 10.9 Metric (N-m)
		PSI	MPa	Grade 8 UNC (lb-ft)	Grade 10.9	
-8	0.50"	5000	35.0	24	32	
-12	0.75"	5000	35.0	44	70	
-16	1.00"	4600	32.0	44	70	
-20	1.25"	4000	28.0	68	70	
-24	1.50"	3000	21.0	111	130	
-32	2.00"	3000	21.0	111	130	
-40	2.50"	2500	17.5	111	130	
-48	3.00"	2300	16.0	218	295	
-56	3.50"	500	3.5	218	295	
-64	4.00"	500	3.5	218	295	
-80	5.00"	500	3.5	218	295	

CODE 62 SAE J518-2 / ISO 6162-2						
Dash Size	Inch Size	Max Working Pressure		Fastener Torque Value		Grade 10.9 Metric (N-m)
		PSI	MPa	Grade 8 UNC (lb-ft)	Grade 10.9	
-8	0.50"	6000	40.0	24	32	
-12	0.75"	6000	40.0	44	70	
-16	1.00"	6000	40.0	68	130	
-20	1.25"	6000	40.0	111	130	
-24	1.50"	6000	40.0	218	295	
-32	2.00"	6000	40.0	332	550	

Please note that all pressure ratings in this catalog refer to the flange connection. Adapting the flange to other connections, such as braze tube, welded pipe, or threaded ports / stud ends could reduce maximum working pressure.