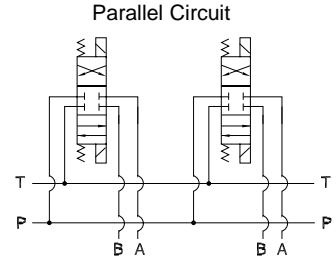
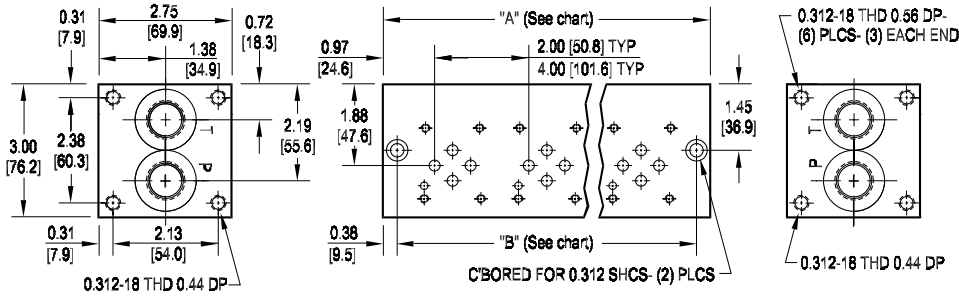
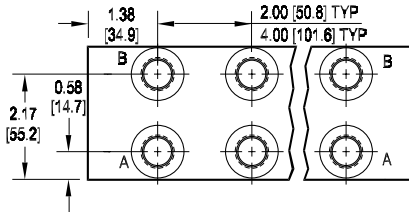


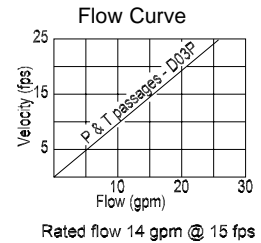
D03 LC Parallel Circuit Manifold



NOTE:
Mounting hardware is ordered separately.
 See page 60 for available bracket or screw mounting kits at no extra charge. Flange and gasket kits are also available for a nominal charge.



| Code 2 (2.00") valve spacing | Code 2 (2.00") valve spacing | | | | | | Code 4 (4.00") valve spacing | | | | |
|------------------------------|------------------------------|---------|---------|---------|---------|---------|------------------------------|-----------------|---------|---------|----|
| | No. of stations | * 01 | 02 | 03 | 04 | 05 | 06 | No. of stations | 02 | 03 | 04 |
| "A" length | 2.75 | 4.75 | 6.75 | 8.75 | 10.75 | 12.75 | "A" length | 6.75 | 10.75 | 14.75 | |
| inch [mm] | [69.9] | [120.7] | [171.5] | [222.3] | [273.1] | [323.9] | inch [mm] | [171.5] | [273.1] | [374.7] | |
| "B" dimension | 2.00 | 4.00 | 6.00 | 8.00 | 10.00 | 12.00 | "B" dimension | 6.00 | 10.00 | 14.00 | |
| inch [mm] | [50.8] | [101.6] | [152.4] | [203.2] | [254.0] | [304.8] | inch [mm] | [152.4] | [254.0] | [355.6] | |
| apx. weight alum | 2.5 | 4 | 6 | 7.5 | 9 | 11 | apx. weight alum | 6 | 9 | 13 | |
| lb [kg] | [1.2] | [2] | [3] | [4] | [4.5] | [5] | lb [kg] | [3] | [4.5] | [6] | |
| apx. weight iron | 6 | 10.5 | 15 | 19 | 23 | 28 | apx. weight iron | 15 | 23 | 32 | |
| lb [kg] | [3] | [5] | [7] | [9] | [11] | [13] | lb [kg] | [8] | [12] | [15] | |



* "A" length of 01 station with relief cavity is 3.75 [95.3]. "B" dimension is 3.00 [76.2].

Specifications, descriptions, and dimensional data are subject to correction or change without notice or incurring obligation. Download latest catalog page revisions at www.damanifolds.com.

Ordering Information

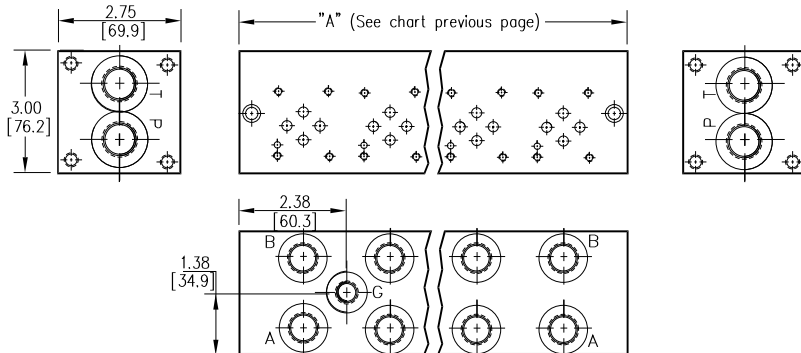
| Product Line | Material | Valve Pattern | Circuit | No. of Stations | Valve Spacing | Port Threads | Options | | | | | | | | | | | |
|-------------------|--|--|--|--|---|---|---------|-------|-------|----------|---------------------|------|------|----------|-----------------|-----|----|---|
| L Low Cost | Material A Aluminum - 6061-T6 3000† psi • 20.7 MPa D Ductile Iron - D4512 5000† psi • 34.5 MPa † Working pressure should be considered in accordance with ISO 4413 to determine appropriate material type. | D03 ISO 4401-03-02 NFPA T3.5.1-D03 See Tech Information | P Parallel Circuit Standard Flow | No. of Stations Aluminum 01...06 Available with spacing code 2 02...04 Available with spacing code 4 Ductile Iron 01...06 Available with spacing code 2 02...04 Available with spacing code 4 | Valve Spacing 2 2.00 inch [50.8 mm] 4 4.00 inch [101.6 mm] | Port Threads <table border="1"> <thead> <tr> <th></th> <th>P & T</th> <th>A & B</th> </tr> </thead> <tbody> <tr> <td>P</td> <td>NPTF • ANSI B1.20.3</td> <td>0.50</td> <td>0.38</td> </tr> <tr> <td>S</td> <td>SAE • ISO 11926</td> <td>-10</td> <td>-8</td> </tr> </tbody> </table> | | P & T | A & B | P | NPTF • ANSI B1.20.3 | 0.50 | 0.38 | S | SAE • ISO 11926 | -10 | -8 | Options See next page for available options and ordering codes. |
| | | | | | | | | P & T | A & B | | | | | | | | | |
| P | NPTF • ANSI B1.20.3 | 0.50 | 0.38 | | | | | | | | | | | | | | | |
| S | SAE • ISO 11926 | -10 | -8 | | | | | | | | | | | | | | | |
| | | | | | | | | | | | | | | | | | | |

Options - D03 LC Parallel Manifold

Contact Daman or consult web CADalog for cavity locations if critical.

Valve cavity location when cavity, or cavity-isolation combination L or D is specified.

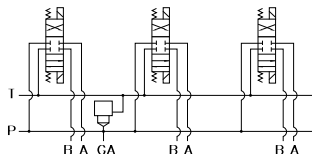
Valve cavity location for cavity-isolation combination R or D.



| ISOLATIONS | | |
|--|----------------------------------|--------------------------|
| Daman isolation options allow a manifold to have two independent pressure and/or tank ports. Isolations are drilled rather than plugged to ensure a leakproof and failproof isolation. | | |
| Ordering code letter: | * Isolation is between stations: | Available # of stations: |
| 2.00 [50.8] spacing | | |
| A | 01 & 02 | 02-06 |
| B | 02 & 03 | 03-06 |
| C | 03 & 04 | 04-06 |
| D | 04 & 05 | 05-06 |
| E | 05 & 06 | 06 |
| 4.00 [101.6] spacing | | |
| A | 01 & 02 | 02-04 |
| B | 02 & 03 | 03-04 |
| C | 03 & 04 | 04 |

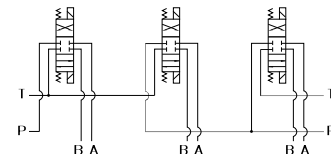
* Stations are numbered left to right.

Parallel Circuit with Cavity and Gauge Port



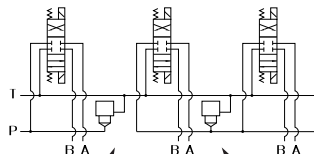
Valves with P in the nose and T out the side must be used.

Parallel Circuit with Isolations



Manifold shown with P isolation between 1 & 2 (PA), and T isolation between 2 & 3 (TB).

Cavity & Isolation Combinations



Option code L Cavity left of isolation
Option code R Cavity right of isolation
Option code D includes both cavities

NOTES:

- 1) The GA port is not available on a (1) station manifold.
- 2) The GA port is not available when a pressure isolation is specified.
- 3) Some cavity and isolation combinations are not possible. Consult factory to determine availability.

Ordering Information



| Gauge Port |
|--|
| Omit if gauge port not required. |
| G Gauge Port for system pressure |
| If Port Thread code is: P, then Gauge port = 0.25 NPTF S, then Gauge port = -4 SAE |

| Cavity |
|--|
| Omit if cavity not required. |
| C Common cavity: No solenoid clearance C-10-2 (P in nose) |
| S Sun Cavity: T-10A (P in nose) See Tech Info for valves. |

| Tank Isolation |
|--|
| Omit if T isolation not required. |
| TA...TE Available with spacing code 2 |
| TA...TC Available with spacing code 4 |

| Pressure Isolation |
|--|
| Omit if P isolation not required. Not available with G option. |
| PA...PE Available with spacing code 2 |
| PA...PC Available with spacing code 4 |

| Relief / Isolation Combinations |
|--|
| Specify when using a combination of cavity and isolation options. Cavities do not have solenoid clearance. |
| L Relief cavity is located left of the isolation. |
| R Relief cavity is located right of the isolation. |
| D Two relief cavities, one each side of isolation. |

Daman Products Company, Inc.

1811 North Home Street • Mishawaka, IN 46545-7267 USA • North America: 800.959.7841 • Fax: 800.241.7664
International: 574.259.7841 • Fax: 574.259.7665 • Email: sales@daman.com • Web: www.daman.com