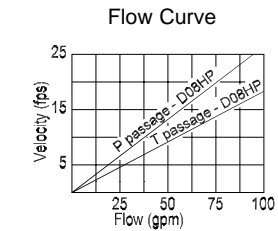
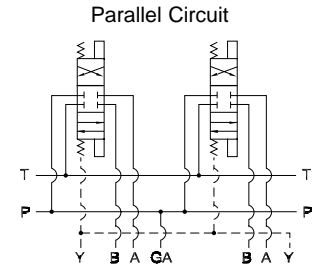
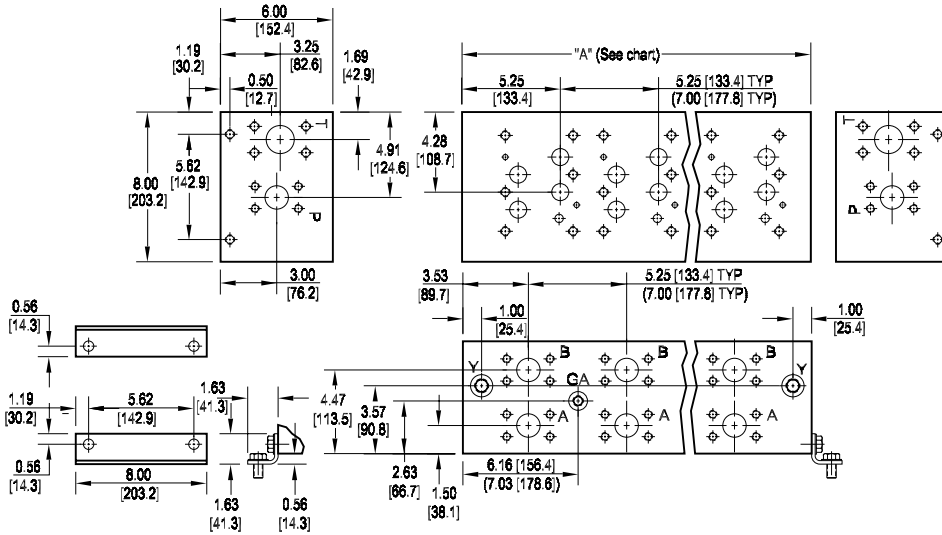


# D08 High Flow Parallel Circuit Manifold - Flange Ports



Rated flow Pressure 57 gpm @ 15 fps  
 Rated flow Tank 83 gpm @ 15 fps

No. of stations	01	02	03	04	05	06	07
"A" length (code 5 spa.) inch [mm]	7.63 [193.7]	12.88 [327.0]	18.13 [460.4]	23.38 [593.7]	28.63 [727.1]	33.88 [860.4]	39.13 [993.8]
apx. weight alum lb [kg]	37 [16.6]	62 [28]	87 [40]	112 [51]	137 [62]	163 [74]	188 [85]
apx. weight iron lb [kg]	99 [45]	167 [76]	235 [107]	303 [137]	--	--	--
"A" length (code 7 spa.) inch [mm]	--	14.63 [371.5]	21.63 [549.3]	28.63 [727.1]	35.63 [904.9]	--	--
apx. weight alum lb [kg]	--	70 [32]	104 [47]	137 [62]	171 [78]	--	--
apx. weight iron lb [kg]	--	190 [86]	280 [127]	--	--	--	--

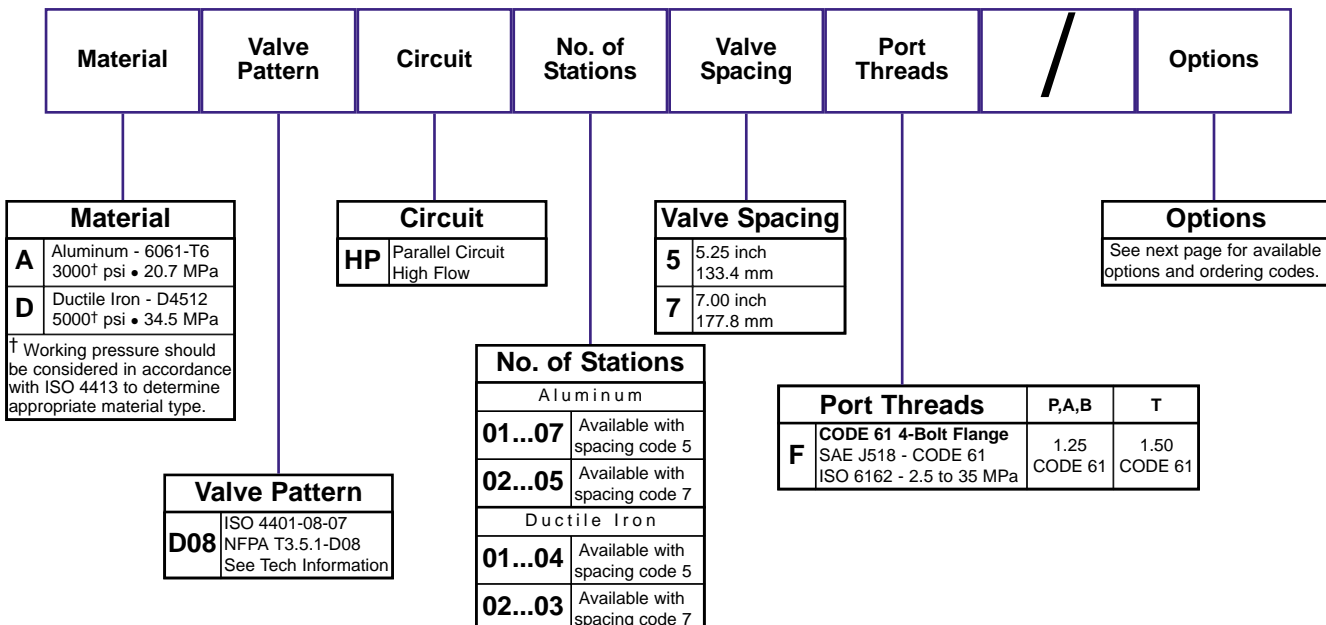
All mounting hardware is supplied.  
 See page 63 for itemized list.

Port code	Valve mtg.	Manifold mtg.	Flange mtg.	GA port	Y port	X port *
<b>F</b>	0.50-13 UNC x 1.19 [30] DP	0.50-13 UNC x 0.88 [22] DP	ISO 6162 Type II - Inch	-6 SAE J1926	-8 SAE J1926	-4 SAE J1926
<b>F / M</b>	M12 ISO 6H x 1.19 [30] DP	M12 ISO 6H x 0.88 [22] DP	ISO 6162 Type I - metric	NONE	<b>M16</b> ISO 6149	<b>M10</b> ISO 6149

\* X port is optional. See options on next page.

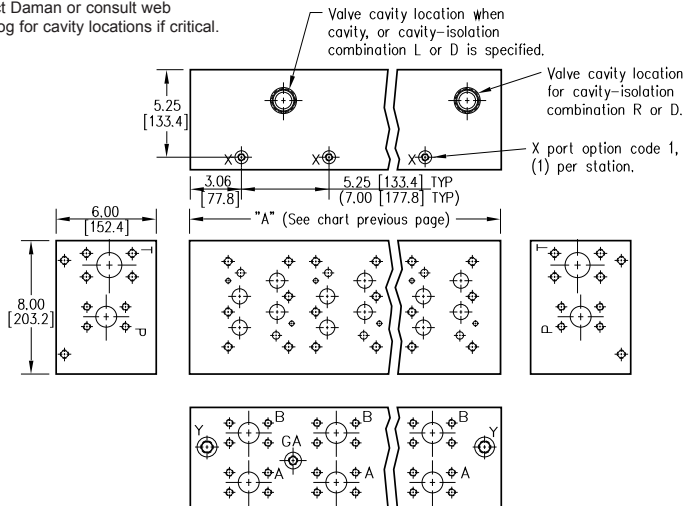
Specifications, descriptions, and dimensional data are subject to correction or change without notice or incurring obligation.  
 Download latest catalog page revisions at [www.damanifolds.com](http://www.damanifolds.com).

## Ordering Information

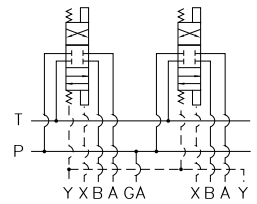


# Options - D08 High Flow Parallel Manifold Flange Ports

Contact Daman or consult web CADalog for cavity locations if critical.



Parallel Circuit with X



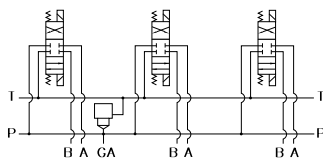
## ISOLATIONS

Daman isolation options allow a manifold to have two independent pressure and/or tank ports. Isolations are drilled rather than plugged to ensure a leakproof and failproof isolation.

Ordering code letter:	* Isolation is between stations:	Available # of stations:
5.25 [133.4] spacing		
A	01 & 02	02-07
B	02 & 03	03-07
C	03 & 04	04-07
D	04 & 05	05-07
E	05 & 06	06-07
F	06 & 07	07
7.00 [177.8] spacing		
A	01 & 02	02-05
B	02 & 03	03-05
C	03 & 04	04-05
D	04 & 05	05

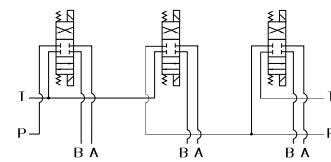
\* Stations are numbered left to right.

Parallel Circuit with Cavity



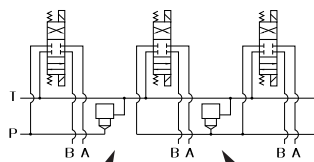
Valves with P in the nose and T out the side must be used.

Parallel Circuit with Isolations



Manifold shown with P isolation between 1 & 2 (PA), and T isolation between 2 & 3 (TB).

Cavity & Isolation Combinations



Option code L Cavity left of isolation  
Option code R Cavity right of isolation  
Option code D includes both cavities

### NOTES:

1) The GA port is not available when a pressure isolation is located between stations 1 & 2.

## Ordering Information

Thread Type	Pilot Ports	Cavity	Pressure Isolation	Tank Isolation	Cavity & Isolation Combinations																																														
<table border="1"> <tr><th colspan="2">Thread Type</th></tr> <tr><td>Omit</td><td>Inch threads / ports</td></tr> <tr><td>M</td><td>Metric threads / ports</td></tr> </table>	Thread Type		Omit	Inch threads / ports	M	Metric threads / ports	<table border="1"> <tr><th colspan="2">Pilot Ports</th></tr> <tr><td colspan="2">Omit if X ports not required</td></tr> <tr><td>1</td><td>X port ISO 4401-08-07 NFPA T3.5.1-D08</td></tr> </table>	Pilot Ports		Omit if X ports not required		1	X port ISO 4401-08-07 NFPA T3.5.1-D08	<table border="1"> <tr><th colspan="2">Cavity</th></tr> <tr><td colspan="2">Omit if cavity not required</td></tr> <tr><td>C</td><td>Common cavity: No solenoid clearance C-16-2 (P in nose)</td></tr> <tr><td>S</td><td>Sun Cavity: T-16A (P in nose) See Tech Info for valves.</td></tr> </table>	Cavity		Omit if cavity not required		C	Common cavity: No solenoid clearance C-16-2 (P in nose)	S	Sun Cavity: T-16A (P in nose) See Tech Info for valves.	<table border="1"> <tr><th colspan="2">Pressure Isolation</th></tr> <tr><td colspan="2">Omit if P isolation not required</td></tr> <tr><td>PA...PF</td><td>Available with spacing code 5</td></tr> <tr><td>PA...PD</td><td>Available with spacing code 7</td></tr> </table>	Pressure Isolation		Omit if P isolation not required		PA...PF	Available with spacing code 5	PA...PD	Available with spacing code 7	<table border="1"> <tr><th colspan="2">Tank Isolation</th></tr> <tr><td colspan="2">Omit if T isolation not required</td></tr> <tr><td>TA...TF</td><td>Available with spacing code 5</td></tr> <tr><td>TA...TD</td><td>Available with spacing code 7</td></tr> </table>	Tank Isolation		Omit if T isolation not required		TA...TF	Available with spacing code 5	TA...TD	Available with spacing code 7	<table border="1"> <tr><th colspan="2">Relief / Isolation Combinations</th></tr> <tr><td colspan="2">Specify when using a combination of cavity and isolation options. Cavities do not have solenoid clearance.</td></tr> <tr><td>L</td><td>Relief cavity is located left of the isolation.</td></tr> <tr><td>R</td><td>Relief cavity is located right of the isolation.</td></tr> <tr><td>D</td><td>Two relief cavities, one each side of isolation.</td></tr> </table>	Relief / Isolation Combinations		Specify when using a combination of cavity and isolation options. Cavities do not have solenoid clearance.		L	Relief cavity is located left of the isolation.	R	Relief cavity is located right of the isolation.	D	Two relief cavities, one each side of isolation.
Thread Type																																																			
Omit	Inch threads / ports																																																		
M	Metric threads / ports																																																		
Pilot Ports																																																			
Omit if X ports not required																																																			
1	X port ISO 4401-08-07 NFPA T3.5.1-D08																																																		
Cavity																																																			
Omit if cavity not required																																																			
C	Common cavity: No solenoid clearance C-16-2 (P in nose)																																																		
S	Sun Cavity: T-16A (P in nose) See Tech Info for valves.																																																		
Pressure Isolation																																																			
Omit if P isolation not required																																																			
PA...PF	Available with spacing code 5																																																		
PA...PD	Available with spacing code 7																																																		
Tank Isolation																																																			
Omit if T isolation not required																																																			
TA...TF	Available with spacing code 5																																																		
TA...TD	Available with spacing code 7																																																		
Relief / Isolation Combinations																																																			
Specify when using a combination of cavity and isolation options. Cavities do not have solenoid clearance.																																																			
L	Relief cavity is located left of the isolation.																																																		
R	Relief cavity is located right of the isolation.																																																		
D	Two relief cavities, one each side of isolation.																																																		