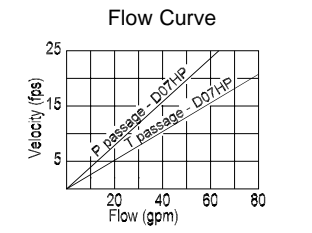
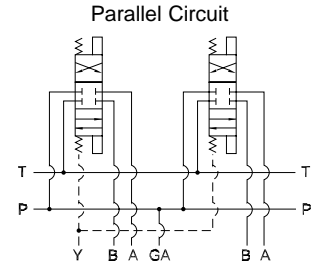
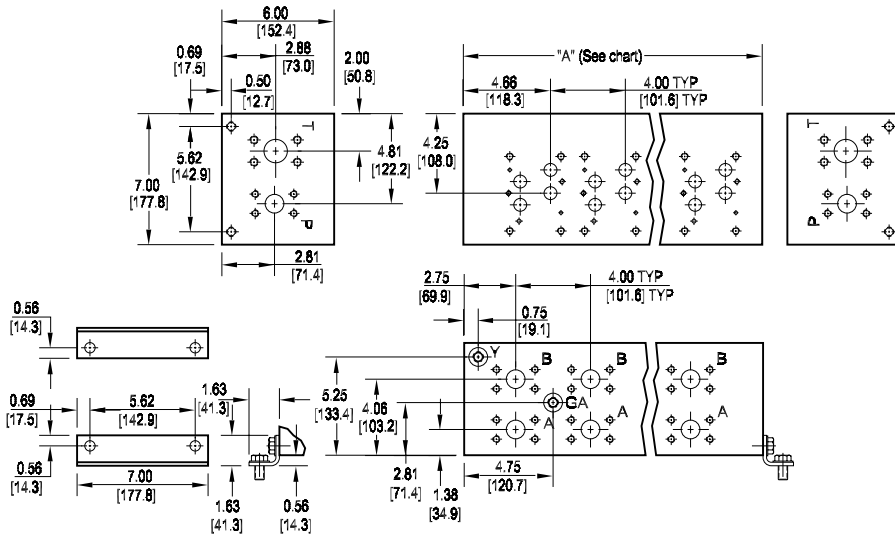


# D07 High Flow Parallel Circuit Manifold - Flange Ports



No. of stations	* 01	02	03	04	05	06
"A" length inch [mm]	6.63 [168.3]	10.63 [269.9]	14.63 [371.5]	18.63 [473.1]	22.63 [574.7]	26.63 [676.3]
apx. weight alum lb [kg]	28 [12.6]	45 [20]	61 [28]	78 [36]	95 [43]	112 [51]
apx. weight iron lb [kg]	75 [34]	120 [55]	166 [75]	211 [96]	257 [116]	302 [137]

\* Length of 01 station with relief cavity 7.13 [181.0]. Gauge port not available on 01 station.

All mounting hardware is supplied.  
See page 63 for itemized list.

Port code	Valve mtg.	Manifold mtg.	Flange mtg.	GA Port	Y Port	X Port *
<b>F</b>	0.38-16 UNC x 1.00 [25] DP	0.50-13 UNC x 0.88 [22] DP	ISO 6162	-6 SAE J1926	-6 SAE J1926	-4 SAE J1926
	0.25-20 UNC x 0.75 [19] DP	0.88 [22] DP	Type II - Inch			
<b>F / M</b>	M10 ISO 6H x 1.00 [25] DP	M12 ISO 6H x 0.88 [22] DP	ISO 6162	NONE	<b>M14</b> ISO 6149	<b>M10</b> ISO 6149
	M6 ISO 6H x 0.75 [19] DP	0.88 [22] DP	Type I - metric			

\* X port is optional. See options on next page.

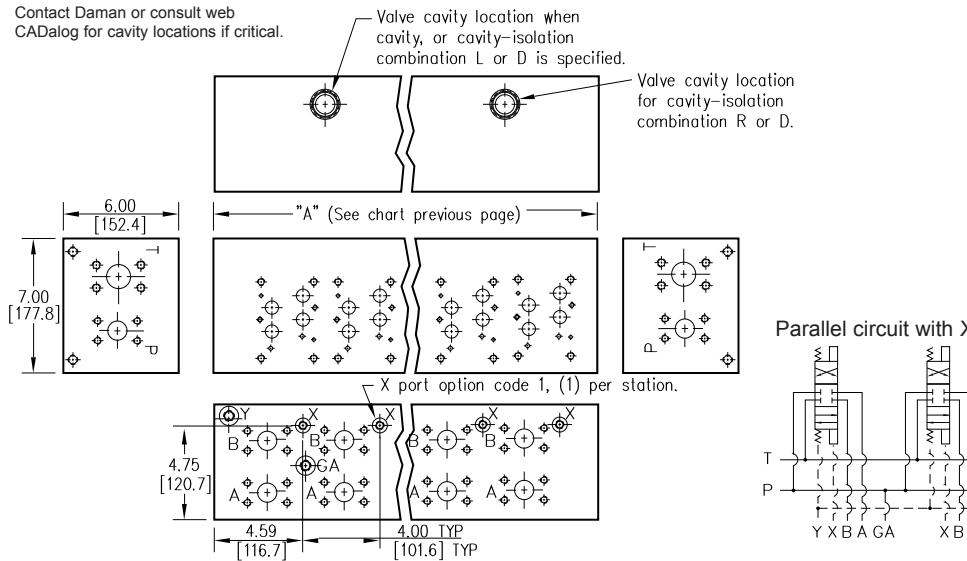
Specifications, descriptions, and dimensional data are subject to correction or change without notice or incurring obligation.  
Download latest catalog page revisions at [www.damanifolds.com](http://www.damanifolds.com).

## Ordering Information

Material	Valve Pattern	Circuit	No. of Stations	Valve Spacing	Port Threads	Options																																					
<table border="1" style="width: 100%;"> <thead> <tr><th colspan="2">Material</th></tr> </thead> <tbody> <tr> <td style="text-align: center;"><b>A</b></td> <td>Aluminum - 6061-T6 3000† psi • 20.7 MPa</td> </tr> <tr> <td style="text-align: center;"><b>D</b></td> <td>Ductile Iron - D4512 5000† psi • 34.5 MPa</td> </tr> </tbody> </table> <p>† Working pressure should be considered in accordance with ISO 4413 to determine appropriate material type.</p>	Material		<b>A</b>	Aluminum - 6061-T6 3000† psi • 20.7 MPa	<b>D</b>	Ductile Iron - D4512 5000† psi • 34.5 MPa	<table border="1" style="width: 100%;"> <thead> <tr><th colspan="2">Valve Pattern</th></tr> </thead> <tbody> <tr> <td style="text-align: center;"><b>D07</b></td> <td>ISO 4401-07-06 NFPA T3.5.1-D07 See Tech Information</td> </tr> </tbody> </table>	Valve Pattern		<b>D07</b>	ISO 4401-07-06 NFPA T3.5.1-D07 See Tech Information	<table border="1" style="width: 100%;"> <thead> <tr><th colspan="2">Circuit</th></tr> </thead> <tbody> <tr> <td style="text-align: center;"><b>HP</b></td> <td>Parallel Circuit High Flow</td> </tr> </tbody> </table>	Circuit		<b>HP</b>	Parallel Circuit High Flow	<table border="1" style="width: 100%;"> <thead> <tr><th colspan="2">No. of Stations</th></tr> </thead> <tbody> <tr> <td colspan="2">Aluminum or Ductile Iron</td> </tr> <tr> <td style="text-align: center;"><b>01...06</b></td> <td>Available with spacing code 4</td> </tr> </tbody> </table>	No. of Stations		Aluminum or Ductile Iron		<b>01...06</b>	Available with spacing code 4	<table border="1" style="width: 100%;"> <thead> <tr><th colspan="2">Valve Spacing</th></tr> </thead> <tbody> <tr> <td style="text-align: center;"><b>4</b></td> <td>4.00 inch 101.6 mm</td> </tr> </tbody> </table>	Valve Spacing		<b>4</b>	4.00 inch 101.6 mm	<table border="1" style="width: 100%;"> <thead> <tr><th colspan="3">Port Threads</th></tr> </thead> <tbody> <tr> <td style="text-align: center;"><b>F</b></td> <td><b>CODE 61 4-Bolt Flange</b> SAE J518 - CODE 61 ISO 6162 - 2.5 to 35 MPa</td> <td></td> </tr> <tr> <td></td> <td>1.00 CODE 61</td> <td>1.25 CODE 61</td> </tr> </tbody> </table>	Port Threads			<b>F</b>	<b>CODE 61 4-Bolt Flange</b> SAE J518 - CODE 61 ISO 6162 - 2.5 to 35 MPa			1.00 CODE 61	1.25 CODE 61	<table border="1" style="width: 100%;"> <thead> <tr><th colspan="2">Options</th></tr> </thead> <tbody> <tr> <td colspan="2">See next page for available options and ordering codes.</td> </tr> </tbody> </table>	Options		See next page for available options and ordering codes.	
Material																																											
<b>A</b>	Aluminum - 6061-T6 3000† psi • 20.7 MPa																																										
<b>D</b>	Ductile Iron - D4512 5000† psi • 34.5 MPa																																										
Valve Pattern																																											
<b>D07</b>	ISO 4401-07-06 NFPA T3.5.1-D07 See Tech Information																																										
Circuit																																											
<b>HP</b>	Parallel Circuit High Flow																																										
No. of Stations																																											
Aluminum or Ductile Iron																																											
<b>01...06</b>	Available with spacing code 4																																										
Valve Spacing																																											
<b>4</b>	4.00 inch 101.6 mm																																										
Port Threads																																											
<b>F</b>	<b>CODE 61 4-Bolt Flange</b> SAE J518 - CODE 61 ISO 6162 - 2.5 to 35 MPa																																										
	1.00 CODE 61	1.25 CODE 61																																									
Options																																											
See next page for available options and ordering codes.																																											

# Options - D07 High Flow Parallel Manifold Flange Ports

Contact Daman or consult web CADalog for cavity locations if critical.



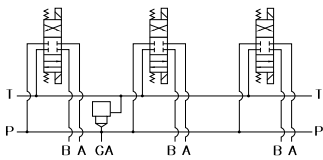
ISOLATIONS		
Daman isolation options allow a manifold to have two independent pressure and/or tank ports. Isolations are drilled rather than plugged to ensure a leakproof and failproof isolation.		
Ordering code letter:	* Isolation is between stations:	Available # of stations:
A	01 & 02	02-06
B	02 & 03	03-06
C	03 & 04	04-06
D	04 & 05	05-06
E	05 & 06	06

\* Stations are numbered left to right.

**NOTES:**

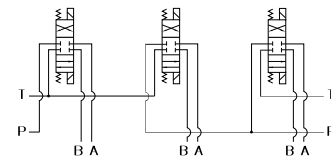
- 1) The GA port is not available on a (1) station manifold.
- 2) The GA port is not available when a pressure isolation is located between stations 1 & 2.

Parallel Circuit with Cavity



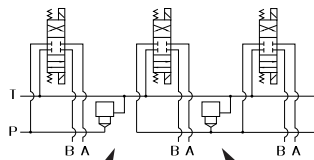
Valves with P in the nose and T out the side must be used.

Parallel Circuit with Isolations



Manifold shown with P isolation between 1 & 2 (PA), and T isolation between 2 & 3 (TB).

Cavity & Isolation Combinations



Option code L Cavity left of isolation  
Option code R Cavity right of isolation  
Option code D includes both cavities

## Ordering Information

...	Thread Type	Pilot Ports	Cavity	Pressure Isolation	Tank Isolation	Cavity & Isolation Combinations																																										
	<table border="1"> <tr><th colspan="2">Thread Type</th></tr> <tr><td>Omit</td><td>Inch threads / ports</td></tr> <tr><td>M</td><td>Metric threads / ports</td></tr> </table>	Thread Type		Omit	Inch threads / ports	M	Metric threads / ports	<table border="1"> <tr><th colspan="2">Pilot Ports</th></tr> <tr><td colspan="2">Omit if X ports not required</td></tr> <tr><td>1</td><td>X port ISO 4401-07-06 NFPA T3.5.1-D07</td></tr> </table>	Pilot Ports		Omit if X ports not required		1	X port ISO 4401-07-06 NFPA T3.5.1-D07	<table border="1"> <tr><th colspan="2">Cavity</th></tr> <tr><td colspan="2">Omit if cavity not required</td></tr> <tr><td>C</td><td>Common cavity: No solenoid clearance. C-16-2 (P in nose)</td></tr> <tr><td>S</td><td>Sun Cavity: T-16A (P in nose) See Tech Info for valves.</td></tr> </table>	Cavity		Omit if cavity not required		C	Common cavity: No solenoid clearance. C-16-2 (P in nose)	S	Sun Cavity: T-16A (P in nose) See Tech Info for valves.	<table border="1"> <tr><th colspan="2">Pressure Isolation</th></tr> <tr><td colspan="2">Omit if P isolation not required</td></tr> <tr><td>PA...PE</td><td>Available with spacing code 4</td></tr> </table>	Pressure Isolation		Omit if P isolation not required		PA...PE	Available with spacing code 4	<table border="1"> <tr><th colspan="2">Tank Isolation</th></tr> <tr><td colspan="2">Omit if T isolation not required</td></tr> <tr><td>TA...TE</td><td>Available with spacing code 4</td></tr> </table>	Tank Isolation		Omit if T isolation not required		TA...TE	Available with spacing code 4	<table border="1"> <tr><th colspan="2">Cavity &amp; Isolation Combinations</th></tr> <tr><td colspan="2">Specify when using a combination of cavity and isolation options. Cavities do not have solenoid clearance.</td></tr> <tr><td>L</td><td>Relief cavity is located left of the isolation.</td></tr> <tr><td>R</td><td>Relief cavity is located right of the isolation.</td></tr> <tr><td>D</td><td>Two relief cavities, one each side of isolation.</td></tr> </table>	Cavity & Isolation Combinations		Specify when using a combination of cavity and isolation options. Cavities do not have solenoid clearance.		L	Relief cavity is located left of the isolation.	R	Relief cavity is located right of the isolation.	D	Two relief cavities, one each side of isolation.
Thread Type																																																
Omit	Inch threads / ports																																															
M	Metric threads / ports																																															
Pilot Ports																																																
Omit if X ports not required																																																
1	X port ISO 4401-07-06 NFPA T3.5.1-D07																																															
Cavity																																																
Omit if cavity not required																																																
C	Common cavity: No solenoid clearance. C-16-2 (P in nose)																																															
S	Sun Cavity: T-16A (P in nose) See Tech Info for valves.																																															
Pressure Isolation																																																
Omit if P isolation not required																																																
PA...PE	Available with spacing code 4																																															
Tank Isolation																																																
Omit if T isolation not required																																																
TA...TE	Available with spacing code 4																																															
Cavity & Isolation Combinations																																																
Specify when using a combination of cavity and isolation options. Cavities do not have solenoid clearance.																																																
L	Relief cavity is located left of the isolation.																																															
R	Relief cavity is located right of the isolation.																																															
D	Two relief cavities, one each side of isolation.																																															