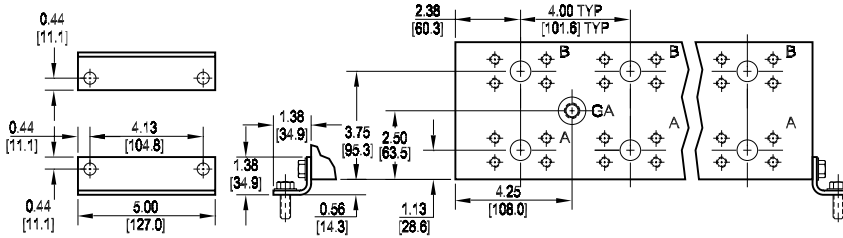
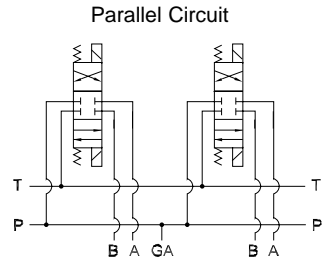
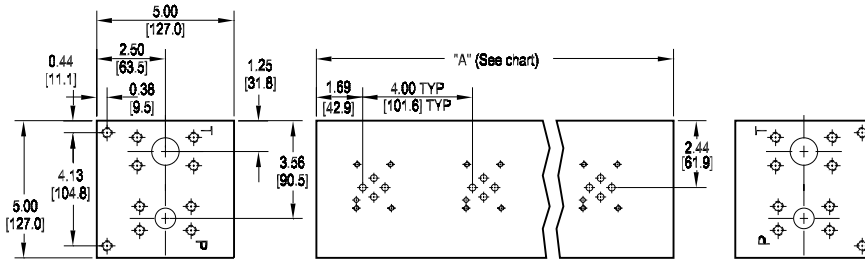
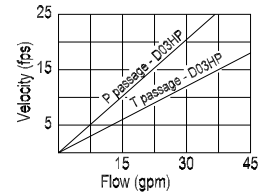


# D03 High Flow Parallel Circuit Manifold - Flange Ports



Flow Curve



Rated flow Pressure 21 gpm @ 15 fps  
 Rated flow Tank 37 gpm @ 15 fps

No. of stations	* 01	02	03	04	05	06	07	08
"A" length inch [mm]	4.75 [120.7]	8.75 [222.3]	12.75 [323.9]	16.75 [425.5]	20.75 [527.1]	24.75 [628.7]	28.75 [730.3]	32.75 [831.9]
apx. weight alum lb [kg]	12 [5.5]	22 [10]	32 [14.5]	42 [19]	52 [23.5]	62 [28]	72 [33]	82 [37]
apx. weight iron lb [kg]	31 [14]	57 [26]	83 [38]	109 [49]	135 [61]	161 [73]	187 [85]	213 [97]

\* Length of 01 station with relief cavity is 5.75 [146.1]. Gauge port not available on 01 station.

All mounting hardware is supplied.  
 See page 62 for itemized list.

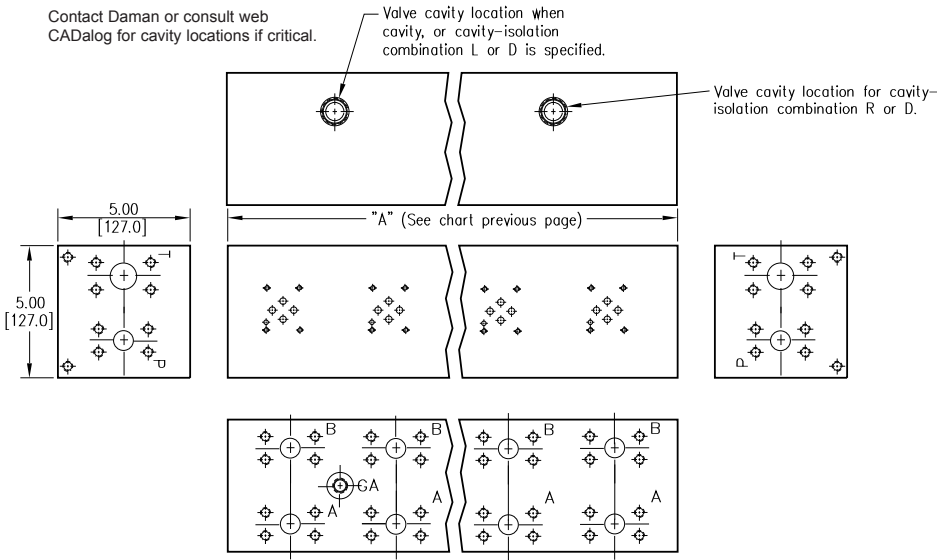
Port code	Valve mtg.	Manifold mtg.	Flange mtg.	GA Port
<b>F</b>	#10-24 UNC x 0.63 [16] DP	0.38-16 UNC x 0.75 [19] DP	ISO 6162 Type II - Inch	-6 SAE J1926
<b>F / M</b>	M5 ISO 6H x 0.63 [16] DP	M10 ISO 6H x 0.75 [19] DP	ISO 6162 Type I - metric	NONE

Specifications, descriptions, and dimensional data are subject to correction or change without notice or incurring obligation.  
 Download latest catalog page revisions at [www.damanifolds.com](http://www.damanifolds.com).

## Ordering Information

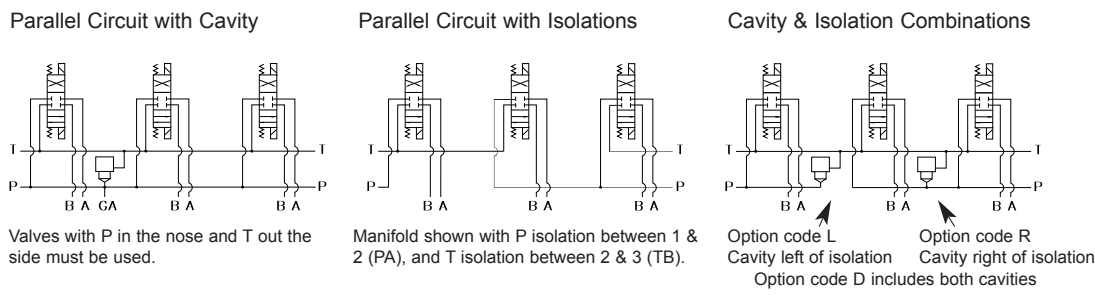
Material	Valve Pattern	Circuit	No. of Stations	Valve Spacing	Port Threads	Options																																									
<table border="1" style="width: 100%; border-collapse: collapse;"> <thead> <tr> <th colspan="2">Material</th> </tr> </thead> <tbody> <tr> <td style="text-align: center;"><b>A</b></td> <td>Aluminum - 6061-T6 3000† psi • 20.7 MPa</td> </tr> <tr> <td style="text-align: center;"><b>D</b></td> <td>Ductile Iron - D4512 5000† psi • 34.5 MPa</td> </tr> <tr> <td colspan="2">† Working pressure should be considered in accordance with ISO 4413 to determine appropriate material type.</td> </tr> </tbody> </table>	Material		<b>A</b>	Aluminum - 6061-T6 3000† psi • 20.7 MPa	<b>D</b>	Ductile Iron - D4512 5000† psi • 34.5 MPa	† Working pressure should be considered in accordance with ISO 4413 to determine appropriate material type.		<table border="1" style="width: 100%; border-collapse: collapse;"> <thead> <tr> <th colspan="2">Valve Pattern</th> </tr> </thead> <tbody> <tr> <td style="text-align: center;"><b>D03</b></td> <td>ISO 4401-03-02 NFPA T3.5.1-D03 See Tech Information</td> </tr> </tbody> </table>	Valve Pattern		<b>D03</b>	ISO 4401-03-02 NFPA T3.5.1-D03 See Tech Information	<table border="1" style="width: 100%; border-collapse: collapse;"> <thead> <tr> <th colspan="2">Circuit</th> </tr> </thead> <tbody> <tr> <td style="text-align: center;"><b>HP</b></td> <td>Parallel Circuit High Flow</td> </tr> </tbody> </table>	Circuit		<b>HP</b>	Parallel Circuit High Flow	<table border="1" style="width: 100%; border-collapse: collapse;"> <thead> <tr> <th colspan="2">No. of Stations</th> </tr> </thead> <tbody> <tr> <td colspan="2">Aluminum or Ductile Iron</td> </tr> <tr> <td style="text-align: center;"><b>01...08</b></td> <td>Available with spacing code 4</td> </tr> </tbody> </table>	No. of Stations		Aluminum or Ductile Iron		<b>01...08</b>	Available with spacing code 4	<table border="1" style="width: 100%; border-collapse: collapse;"> <thead> <tr> <th colspan="2">Valve Spacing</th> </tr> </thead> <tbody> <tr> <td style="text-align: center;"><b>4</b></td> <td>4.00 inch 101.6 mm</td> </tr> </tbody> </table>	Valve Spacing		<b>4</b>	4.00 inch 101.6 mm	<table border="1" style="width: 100%; border-collapse: collapse;"> <thead> <tr> <th colspan="3">Port Threads</th> </tr> </thead> <tbody> <tr> <td rowspan="3" style="text-align: center;"><b>F</b></td> <td colspan="2"><b>CODE 61 4-Bolt Flange</b></td> </tr> <tr> <td>SAE J518 - CODE 61</td> <td>P,A,B</td> </tr> <tr> <td>ISO 6162 - 2.5 to 35 MPa</td> <td>T</td> </tr> <tr> <td></td> <td style="text-align: center;">0.75 CODE 61</td> <td style="text-align: center;">1.00 CODE 61</td> </tr> </tbody> </table>	Port Threads			<b>F</b>	<b>CODE 61 4-Bolt Flange</b>		SAE J518 - CODE 61	P,A,B	ISO 6162 - 2.5 to 35 MPa	T		0.75 CODE 61	1.00 CODE 61	<table border="1" style="width: 100%; border-collapse: collapse;"> <thead> <tr> <th colspan="1">Options</th> </tr> </thead> <tbody> <tr> <td>See next page for available options and ordering codes.</td> </tr> </tbody> </table>	Options	See next page for available options and ordering codes.
Material																																															
<b>A</b>	Aluminum - 6061-T6 3000† psi • 20.7 MPa																																														
<b>D</b>	Ductile Iron - D4512 5000† psi • 34.5 MPa																																														
† Working pressure should be considered in accordance with ISO 4413 to determine appropriate material type.																																															
Valve Pattern																																															
<b>D03</b>	ISO 4401-03-02 NFPA T3.5.1-D03 See Tech Information																																														
Circuit																																															
<b>HP</b>	Parallel Circuit High Flow																																														
No. of Stations																																															
Aluminum or Ductile Iron																																															
<b>01...08</b>	Available with spacing code 4																																														
Valve Spacing																																															
<b>4</b>	4.00 inch 101.6 mm																																														
Port Threads																																															
<b>F</b>	<b>CODE 61 4-Bolt Flange</b>																																														
	SAE J518 - CODE 61	P,A,B																																													
	ISO 6162 - 2.5 to 35 MPa	T																																													
	0.75 CODE 61	1.00 CODE 61																																													
Options																																															
See next page for available options and ordering codes.																																															

# Options - D03 High Flow Parallel Manifold Flange Ports



ISOLATIONS		
Daman isolation options allow a manifold to have two independent pressure and/or tank ports. Isolations are drilled rather than plugged to ensure a leakproof and failproof isolation.		
Ordering code letter:	* Isolation is between stations:	Available # of stations:
A	01 & 02	02-08
B	02 & 03	03-08
C	03 & 04	04-08
D	04 & 05	05-08
E	05 & 06	06-08
F	06 & 07	07-08
G	07 & 08	08

- \* Stations are numbered left to right.
- NOTES:**
- 1) The GA port is not available when a pressure isolation is located between stations 1 & 2.
  - 2) Some cavity and isolation combinations are not possible. Consult factory to determine availability.



# Ordering Information

	Thread Type	Cavity	Pressure Isolation	Tank Isolation	Cavity & Isolation Combinations																																										
<table border="1" style="margin: auto;"> <tr> <td style="width: 50px; height: 30px;"></td> <td style="width: 50px; height: 30px;"></td> <td style="width: 50px; height: 30px;"></td> <td style="width: 50px; height: 30px;"></td> <td style="width: 50px; height: 30px;"></td> <td style="width: 50px; height: 30px;"></td> </tr> </table>							<table border="1" style="width: 100%;"> <tr> <th colspan="2">Thread Type</th> </tr> <tr> <td style="width: 30px; text-align: center;">Omit</td> <td>Inch threads / ports</td> </tr> <tr> <td style="text-align: center;">M</td> <td>Metric threads / ports</td> </tr> </table>	Thread Type		Omit	Inch threads / ports	M	Metric threads / ports	<table border="1" style="width: 100%;"> <tr> <th colspan="2">Cavity</th> </tr> <tr> <td colspan="2">Omit if cavity not required</td> </tr> <tr> <td style="width: 30px; text-align: center;">C</td> <td>Common cavity: With solenoid clearance. C-16-2 (P in nose)</td> </tr> <tr> <td style="text-align: center;">S</td> <td>Sun Cavity: T-3A (P in nose) See Tech Info for valves.</td> </tr> </table>	Cavity		Omit if cavity not required		C	Common cavity: With solenoid clearance. C-16-2 (P in nose)	S	Sun Cavity: T-3A (P in nose) See Tech Info for valves.	<table border="1" style="width: 100%;"> <tr> <th colspan="2">Pressure Isolation</th> </tr> <tr> <td colspan="2">Omit if P isolation not required</td> </tr> <tr> <td style="width: 30px; text-align: center;">PA...PG</td> <td>Available with spacing code 4</td> </tr> </table>	Pressure Isolation		Omit if P isolation not required		PA...PG	Available with spacing code 4	<table border="1" style="width: 100%;"> <tr> <th colspan="2">Tank Isolation</th> </tr> <tr> <td colspan="2">Omit if T isolation not required</td> </tr> <tr> <td style="width: 30px; text-align: center;">TA...TG</td> <td>Available with spacing code 4</td> </tr> </table>	Tank Isolation		Omit if T isolation not required		TA...TG	Available with spacing code 4	<table border="1" style="width: 100%;"> <tr> <th colspan="2">Cavity &amp; Isolation Combinations</th> </tr> <tr> <td colspan="2">Specify when using a combination of cavity and isolation options. Cavities do have solenoid clearance.</td> </tr> <tr> <td style="width: 30px; text-align: center;">L</td> <td>Relief cavity is located left of the isolation.</td> </tr> <tr> <td style="text-align: center;">R</td> <td>Relief cavity is located right of the isolation.</td> </tr> <tr> <td style="text-align: center;">D</td> <td>Two relief cavities, one each side of isolation.</td> </tr> </table>	Cavity & Isolation Combinations		Specify when using a combination of cavity and isolation options. Cavities do have solenoid clearance.		L	Relief cavity is located left of the isolation.	R	Relief cavity is located right of the isolation.	D	Two relief cavities, one each side of isolation.
Thread Type																																															
Omit	Inch threads / ports																																														
M	Metric threads / ports																																														
Cavity																																															
Omit if cavity not required																																															
C	Common cavity: With solenoid clearance. C-16-2 (P in nose)																																														
S	Sun Cavity: T-3A (P in nose) See Tech Info for valves.																																														
Pressure Isolation																																															
Omit if P isolation not required																																															
PA...PG	Available with spacing code 4																																														
Tank Isolation																																															
Omit if T isolation not required																																															
TA...TG	Available with spacing code 4																																														
Cavity & Isolation Combinations																																															
Specify when using a combination of cavity and isolation options. Cavities do have solenoid clearance.																																															
L	Relief cavity is located left of the isolation.																																														
R	Relief cavity is located right of the isolation.																																														
D	Two relief cavities, one each side of isolation.																																														