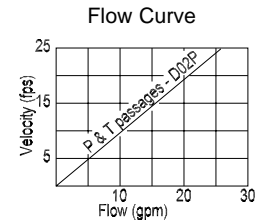
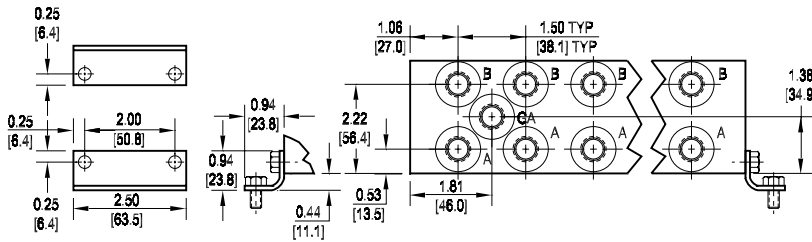
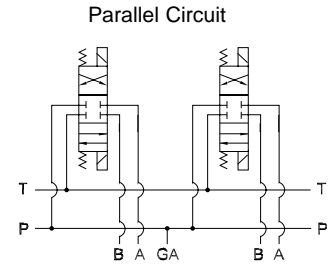
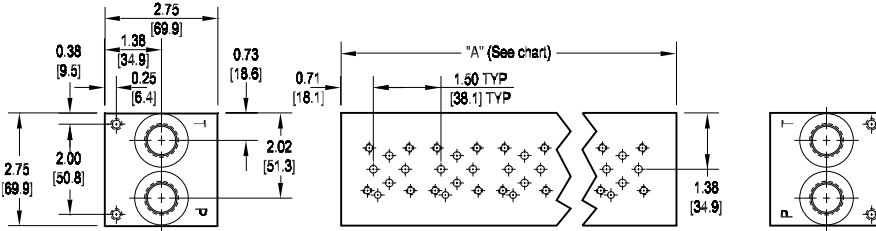


# D02 Parallel Circuit Manifold



Rated flow 14 gpm @ 15 fps

All mounting hardware is supplied.  
See page 62 for itemized list.

No. of stations	* 01	02	03	04	05	06	07	08	09	10
"A" length inch [mm]	2.13 [54.0]	3.63 [92.1]	5.13 [130.2]	6.63 [168.3]	8.13 [206.4]	9.63 [244.5]	11.13 [282.6]	12.63 [320.7]	14.13 [358.8]	15.63 [396.9]
apx. weight alum lb [kg]	3 [1.5]	5 [2.5]	7 [3]	8 [4]	10 [4.5]	12 [5.5]	14 [6]	16 [7]	17 [8]	19 [9]
apx. weight iron lb [kg]	5 [2.5]	8.5 [4]	12 [5.5]	16 [7]	19 [9]	23 [10]	26 [12]	30 [14]	33 [15]	37 [17]

Port code	Valve mtg.	Manifold mtg.
P, S	#10-24 UNC x 0.56 [14] DP	0.25-20 UNC x 0.38 [9.7] DP
B, M, T	M5 ISO 6H x 0.56 [14] DP	M6 ISO 6H x 0.38 [9.7] DP

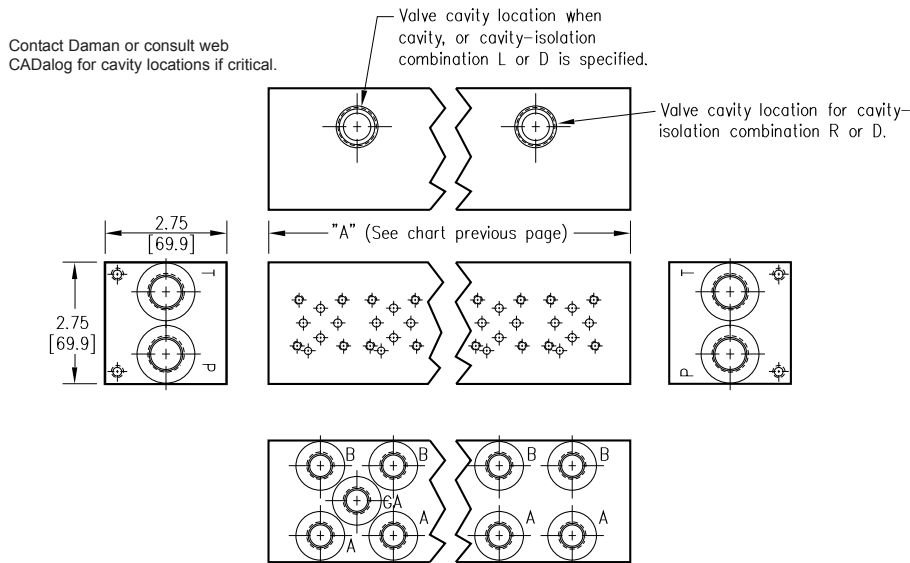
\* Length of 01 station with relief cavity is 3.13 [79.4]. Gauge port not available on 01 station.

Specifications, descriptions, and dimensional data are subject to correction or change without notice or incurring obligation.  
Download latest catalog page revisions at [www.damanifolds.com](http://www.damanifolds.com).

## Ordering Information

Material	Valve Pattern	Circuit	No. of Stations	Valve Spacing	Port Threads	Options																																																												
<table border="1" style="width: 100%; border-collapse: collapse;"> <thead> <tr> <th colspan="2">Material</th> </tr> </thead> <tbody> <tr> <td style="text-align: center;"><b>A</b></td> <td>Aluminum - 6061-T6 3000† psi • 20.7 MPa</td> </tr> <tr> <td style="text-align: center;"><b>D</b></td> <td>Ductile Iron - D4512 5000† psi • 34.5 MPa</td> </tr> </tbody> </table> <p>† Working pressure should be considered in accordance with ISO 4413 to determine appropriate material type.</p>	Material		<b>A</b>	Aluminum - 6061-T6 3000† psi • 20.7 MPa	<b>D</b>	Ductile Iron - D4512 5000† psi • 34.5 MPa	<table border="1" style="width: 100%; border-collapse: collapse;"> <thead> <tr> <th colspan="2">Valve Pattern</th> </tr> </thead> <tbody> <tr> <td style="text-align: center;"><b>D02</b></td> <td>ISO 4401-02-01 NFPA T3.5.1-D02 See Tech Information</td> </tr> </tbody> </table>	Valve Pattern		<b>D02</b>	ISO 4401-02-01 NFPA T3.5.1-D02 See Tech Information	<table border="1" style="width: 100%; border-collapse: collapse;"> <thead> <tr> <th colspan="2">Circuit</th> </tr> </thead> <tbody> <tr> <td style="text-align: center;"><b>P</b></td> <td>Parallel Circuit</td> </tr> </tbody> </table>	Circuit		<b>P</b>	Parallel Circuit	<table border="1" style="width: 100%; border-collapse: collapse;"> <thead> <tr> <th colspan="2">No. of Stations</th> </tr> </thead> <tbody> <tr> <td colspan="2" style="text-align: center;">Aluminum</td> </tr> <tr> <td style="text-align: center;"><b>01...10</b></td> <td>Available with spacing code 1</td> </tr> <tr> <td colspan="2" style="text-align: center;">Ductile Iron</td> </tr> <tr> <td style="text-align: center;"><b>01...10</b></td> <td>Available with spacing code 1</td> </tr> </tbody> </table>	No. of Stations		Aluminum		<b>01...10</b>	Available with spacing code 1	Ductile Iron		<b>01...10</b>	Available with spacing code 1	<table border="1" style="width: 100%; border-collapse: collapse;"> <thead> <tr> <th colspan="2">Valve Spacing</th> </tr> </thead> <tbody> <tr> <td style="text-align: center;"><b>1</b></td> <td>1.50 inch 38.1 mm</td> </tr> </tbody> </table>	Valve Spacing		<b>1</b>	1.50 inch 38.1 mm	<table border="1" style="width: 100%; border-collapse: collapse;"> <thead> <tr> <th colspan="4">Port Threads</th> </tr> <tr> <th></th> <th>P &amp; T</th> <th>A &amp; B</th> <th>GA</th> </tr> </thead> <tbody> <tr> <td style="text-align: center;"><b>P</b></td> <td>NPTF • ANSI B1.20.3</td> <td>0.50</td> <td>0.38</td> </tr> <tr> <td style="text-align: center;"><b>S</b></td> <td>SAE • ISO 11926</td> <td>-8</td> <td>-6</td> </tr> <tr> <td style="text-align: center;"><b>B</b></td> <td>BSPP • ISO 1179</td> <td>0.50</td> <td>0.38</td> </tr> <tr> <td style="text-align: center;"><b>M</b></td> <td>ISO • ISO 6149</td> <td>M18</td> <td>M14</td> </tr> <tr> <td style="text-align: center;"><b>T</b></td> <td>BSPT • ISO 7</td> <td>0.50</td> <td>0.38</td> </tr> </tbody> </table>	Port Threads					P & T	A & B	GA	<b>P</b>	NPTF • ANSI B1.20.3	0.50	0.38	<b>S</b>	SAE • ISO 11926	-8	-6	<b>B</b>	BSPP • ISO 1179	0.50	0.38	<b>M</b>	ISO • ISO 6149	M18	M14	<b>T</b>	BSPT • ISO 7	0.50	0.38	<table border="1" style="width: 100%; border-collapse: collapse;"> <thead> <tr> <th colspan="2">Options</th> </tr> </thead> <tbody> <tr> <td colspan="2">See next page for available options and ordering codes.</td> </tr> </tbody> </table>	Options		See next page for available options and ordering codes.	
Material																																																																		
<b>A</b>	Aluminum - 6061-T6 3000† psi • 20.7 MPa																																																																	
<b>D</b>	Ductile Iron - D4512 5000† psi • 34.5 MPa																																																																	
Valve Pattern																																																																		
<b>D02</b>	ISO 4401-02-01 NFPA T3.5.1-D02 See Tech Information																																																																	
Circuit																																																																		
<b>P</b>	Parallel Circuit																																																																	
No. of Stations																																																																		
Aluminum																																																																		
<b>01...10</b>	Available with spacing code 1																																																																	
Ductile Iron																																																																		
<b>01...10</b>	Available with spacing code 1																																																																	
Valve Spacing																																																																		
<b>1</b>	1.50 inch 38.1 mm																																																																	
Port Threads																																																																		
	P & T	A & B	GA																																																															
<b>P</b>	NPTF • ANSI B1.20.3	0.50	0.38																																																															
<b>S</b>	SAE • ISO 11926	-8	-6																																																															
<b>B</b>	BSPP • ISO 1179	0.50	0.38																																																															
<b>M</b>	ISO • ISO 6149	M18	M14																																																															
<b>T</b>	BSPT • ISO 7	0.50	0.38																																																															
Options																																																																		
See next page for available options and ordering codes.																																																																		

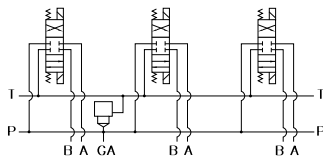
# Options - D02 Parallel Manifold



ISOLATIONS		
Daman isolation options allow a manifold to have two independent pressure and/or tank ports. Isolations are drilled rather than plugged to ensure a leakproof and failproof isolation.		
Ordering code letter:	* Isolation is between stations:	Available # of stations:
A	01 & 02	02-10
B	02 & 03	03-10
C	03 & 04	04-10
D	04 & 05	05-10
E	05 & 06	06-10
F	06 & 07	07-10
G	07 & 08	08-10
H	08 & 09	09-10
J	09 & 10	10

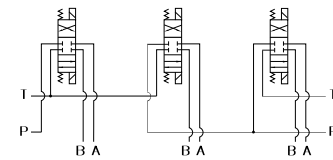
\* Stations are numbered left to right.

Parallel Circuit with Cavity



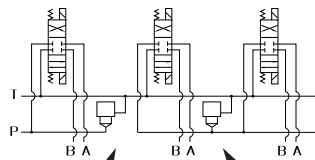
Valves with P in the nose and T out the side must be used.

Parallel Circuit with Isolations



Manifold shown with P isolation between 1 & 2 (PA), and T isolation between 2 & 3 (TB).

Cavity & Isolation Combinations



Option code L  
Cavity left of isolation

Option code R  
Cavity right of isolation

Option code D includes both cavities

### NOTES:

- 1) The GA port is not available on a (1) station manifold.
- 2) The GA port is not available when a pressure isolation is located between stations 1 & 2.
- 3) Some cavity and isolation combinations are not possible. Consult factory to determine availability.

# Ordering Information

